

گولڈن ڈائنامکس (پرائیویٹ) لمیٹڈ



زندگی کے لیے



JLEM

■ Electric Motors

JLM Series



POWERED by
HONDA



SAER
ELETTROPOMPE

TÜV 
AUSTRIA
No. of Certificate 258



Member of:



Research Support by:



GOLDEN DYNAMICS (PVT) LTD.

📍 G. T. Road, Gujranwala - PAKISTAN 📞 +92 55 384 2756, 384 3756, 429 6355 ✉ email@goldendynamics.com 🌐 www.goldendynamics.com

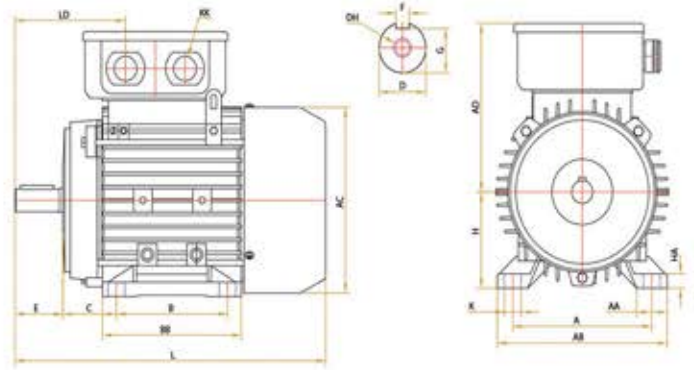




**GOLDEN
DYNAMICS**
(PVT) LTD.



■ Electric Motors
JLM Series



Function:

JLM series three-phase asynchronous electric motors convert electrical power into mechanical power and come in various shapes and sizes. JLM series electric motors have several advantages including its high efficiency rating 'IE1', large starting torque, excellent performance and reliability, low noise and vibration, convenient operation and maintenance. All mounting dimensions and power rating are in conformity to the International Efficiency Class Standards (IEC 60034-30:2008)

Application:

Also referred to as an induction motor, the asynchronous AC motor is among the most common in the world powering machinery and many domestic applications including pumps, refrigerator and air conditioner compressors, washing machines, blowers, dryers and fans etc.

Construction:

JLM series electric motors are made of Aluminum-alloy Die-Casting. The Winding Wire is made of 99.9% pure Copper along with high quality Silicon Electrical Steel Sheet. Rotor Shaft in Steel (AISI 431) fitted with world's finest pre-greased Ball Bearings.

Installation:

IM-B3, B5 & B35 (as per IEC Standards)

Motor Performance Data:

Ambient Temp: -15°C ~ +40°C
 Relative Humidity: 60% (@ +40°C)
 Altitude: Less than 1000 Meters above sea level
 Specifications: Totally Enclosed Fan Cooled (IC411),
 IP-55, Ins. Class: F, S.F: 1.1, 380 V, 50
 Hz, 4P & 2P, Cont. Duty (S-1), Direct Δ
 Connection

Performance Chart:

Model	Motor		RPM	Rated Current			Eff n%	P.F. cos	NT	TS	Tmax	IS	Moment (J)	Noise (A)	Weight (kg)
	HP	kW		A											
				380 V	400 V	415 V									
JL-112M-2	5.5	4	2900	8.2	7.8	7.5	84.4	0.88	13.2	2.2	2.3	7.5	0.0126	74	28
JL-132S1-2	7.5	5.5		11.1	10.5	10.1	85.9	0.88	18.1	2.2	2.3	7.5	0.0377	77	39
JL-132S2-2	10	7.5		14.9	14.1	13.6	87.2	0.88	24.7	2.2	2.3	7.5	0.0499	77	44.5
JL-160M1-2	15	11		21.2	20.2	19.4	88.5	0.89	35.9	2.2	2.3	7.5	0.055	83	69.5
JL-160M2-2	20	15		28.6	27.2	26.2	89.5	0.89	48.9	2.2	2.3	7.5	0.075	83	78
JL-112M-4	5.5	4	1450	8.8	8.4	8.1	84.3	0.82	26.5	2.3	2.3	7	0.0095	62	29.3
JL-132S-4	7.5	5.5		11.7	11.1	10.7	85.8	0.83	36.5	2.3	2.3	7	0.0214	69	41
JL-132M-4	10	7.5		15.6	14.8	14.3	87.1	0.84	0.74	2.3	2.3	7	0.0296	69	47.5
JL-160M-4	15	11		22.5	21.4	20.6	88.5	0.84	0.74	2.3	2.3	7	0.0747	72	72.5
JL-160L-4	20	15		30	28.5	27.4	89.5	0.85	0.75	2.3	2.3	7	0.0918	72	85.6

Dimension Table:

Size	Mounting Dimension (Foot Mounting – B3)																		
	A	AA	AB	BB	HA	AC	AD	B	C	D	DH	E	F	G	H	K	KK	L	LD
112M	190	41	227	180	12	219	117.5	140	70	28	M10x22	60	8	24	112	12x16	2-M32x1.5	401	152
132S	216	51	262	186	15	258	117.5	140	89	38	M12x28	80	10	33	132	12x16	2-M32x1.5	475	180
132M	216	51	262	224	15	258	117.5	178	89	38	M12x28	80	10	33	132	12x16	2-M32x1.5	513	180
160M	254	55	304	260	18	315	167	210	108	42	M16x36	110	12	37	160	15x18	2-M40x1.5	609	268.5
160L	254	55	304	304	18	315	167	254	108	42	M16x36	110	12	37	160	15x18	2-M40x1.5	653	268.5